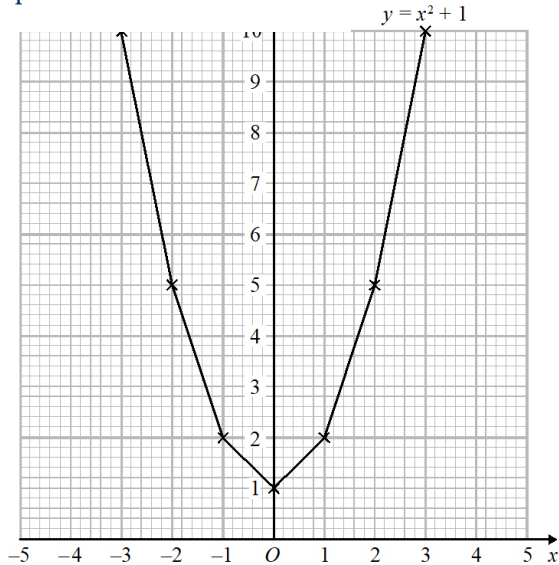


"HOW" ... Below shows a model solution to this question ... read it CAREFULLY!

Brogan needs to draw the graph of $y = x^2 + 1$

Here is her graph.



Write down one thing that is wrong with Brogan's graph.

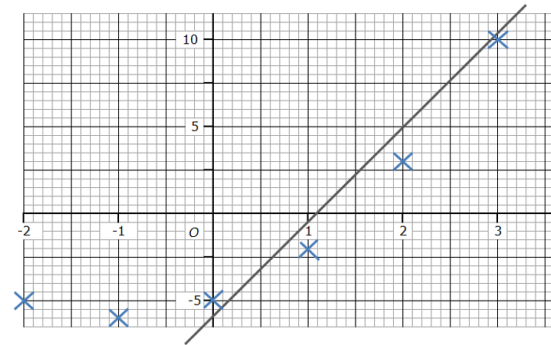
the points should be joined with a curve not straight lines

(Total for Question 29 is 1 mark)

NOW "SHOW WHAT YOU KNOW" JustMaths

Brogan needs to draw the graph of $y = x^2 + 2x - 5$

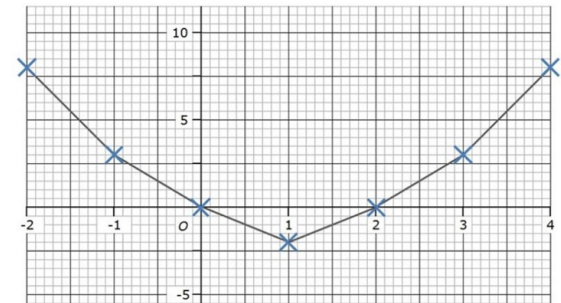
Here is her graph.



Write down one thing that is wrong with Brogan's graph.

Brogan needs to draw the graph of $y = x^2 + 2x - 5$

Here is her graph.



Write down one thing that is wrong with Brogan's graph.